

Sistema de puertas articuladas
Articulated doors system
Système de portes articulées
Drehtüren System



AR

Diseño Industrial
Industrial Design
Design Industriel
Gewerbliche Verwendung



ESP

AR está diseñado para abrir espacios mediante un sistema de paneles articulados deslizando a lo largo de una pared perpendicular a la apertura y reduciendo al máximo el espacio de parking.

- Ideal para aperturas de garajes, almacenes...
- Aprovechamiento óptimo de la luz de paso.
- Sistema práctico para funcionamiento operativo diario.
- Perfil inferior encastrado en el suelo para un deslizamiento óptimo de las puertas.
- Perfil de acero "Neocrom".
- Peso máximo de 125 Kg.
- Rodamiento de bolas "Full Ball Bearing".
- Instalación a pared o a techo.

Sistemas testados hasta 100.000 ciclos según la norma EN1527.

FRA

AR a été conçu pour l'ouverture d'espaces avec un système de panneaux articulés coulissant le long d'un mur perpendiculaire afin de réduire au maximum l'espace de rangement.

- Idéal pour ouverture de garages, entrepôts...
- Optimisation de l'ouverture de passage.
- Système industriel pour fonctionnement opérationnel quotidien.
- Le rail inférieur encastré dans le sol permet le coulissement parfait des portes.
- Rail en acier "Neocrom".
- Poids maximum, 125 Kg.
- Roulement à billes "Full Ball Bearing".
- Installation au mur ou au plafond.

Systèmes testés jusqu'à 100.000 cycles selon la norme EN1527.

ENG

AR has been designed to open up spaces using a system of sliding articulated panels along a wall perpendicular to the opening, keeping door parking space to a minimum.

- Ideal for entrances to garages, storerooms, etc.
- Optimizes clearance.
- Practical system designed for daily use.
- Lower profile embedded in the floor to optimize the sliding action of the doors.
- "Neocrom" steel profile.
- Maximum weight 125 Kg.
- Full Ball Bearing system.
- Wall or ceiling mounted.

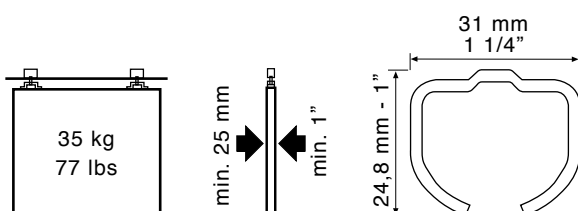
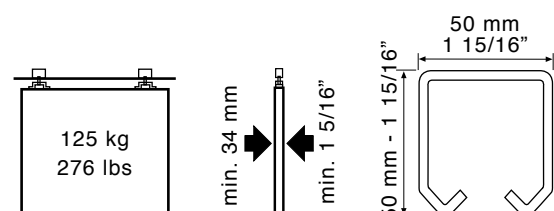
Systems tested up to 100.000 cycles as per standard EN1527.

DEU

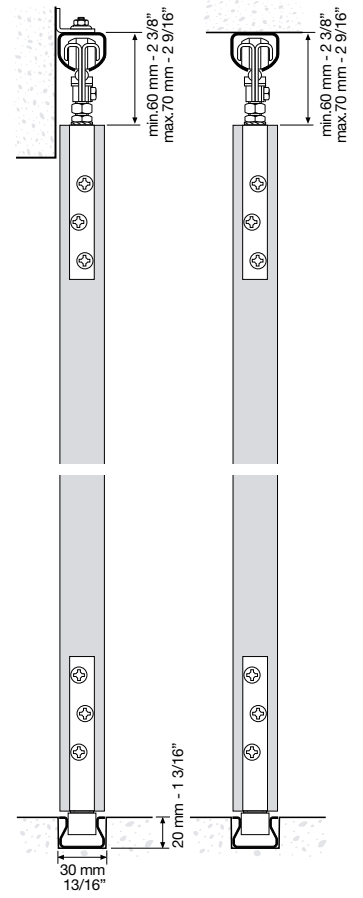
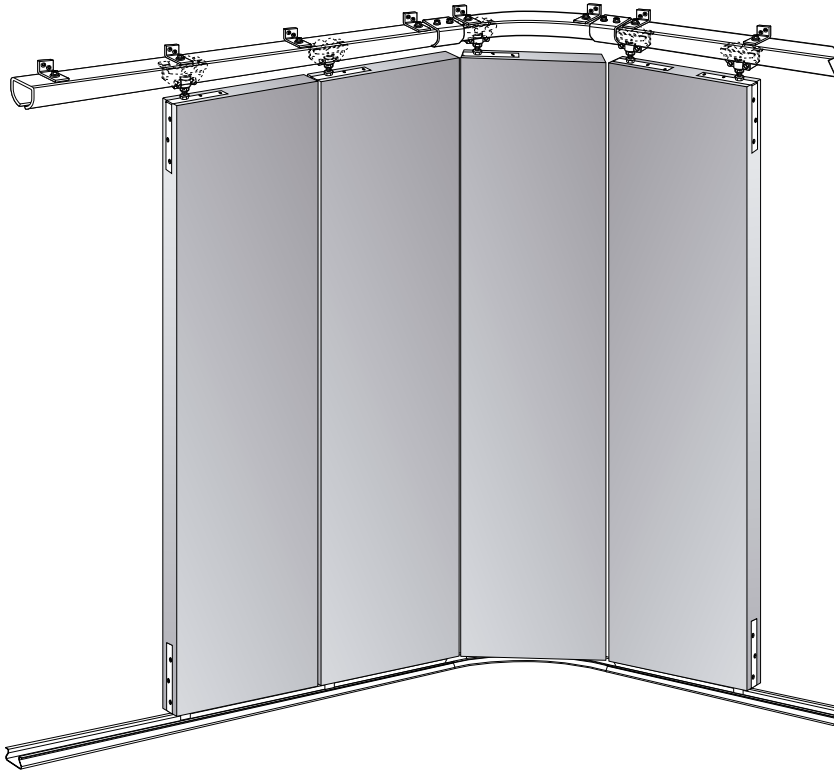
AR ist dafür ausgelegt, durch gegliederte Paneele, die entlang einer Wand senkrecht zur Öffnung verschoben werden, Räume zu öffnen und den Platzbedarf für die gefalteten Paneele so weit wie möglich zu verringern.

- Ideal für Garagenöffnungen, Lagerräume...
- Optimale Nutzung des Öffnungsmaßes.
- Industrietaugliches System für den täglichen Einsatz.
- Bodeneingelassene Führungsschiene für optimales Gleiten der Türen.
- "Neocrom" Stahlprofil.
- Höchstgewicht 125 Kg.
- "Full Ball Bearing" Kugellager
- Wand oder Deckenmontage.

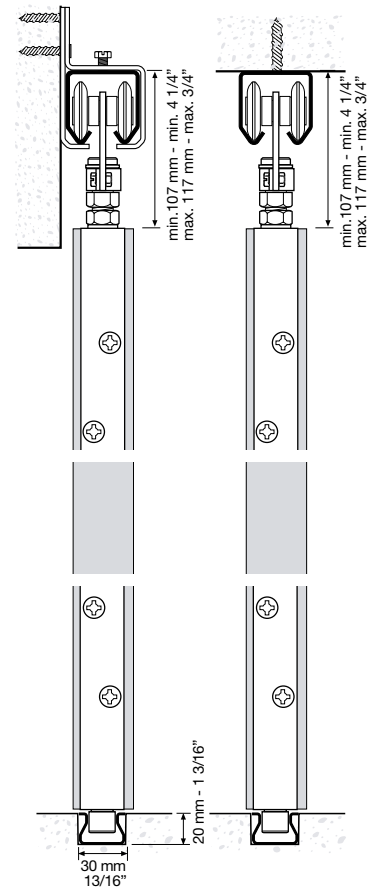
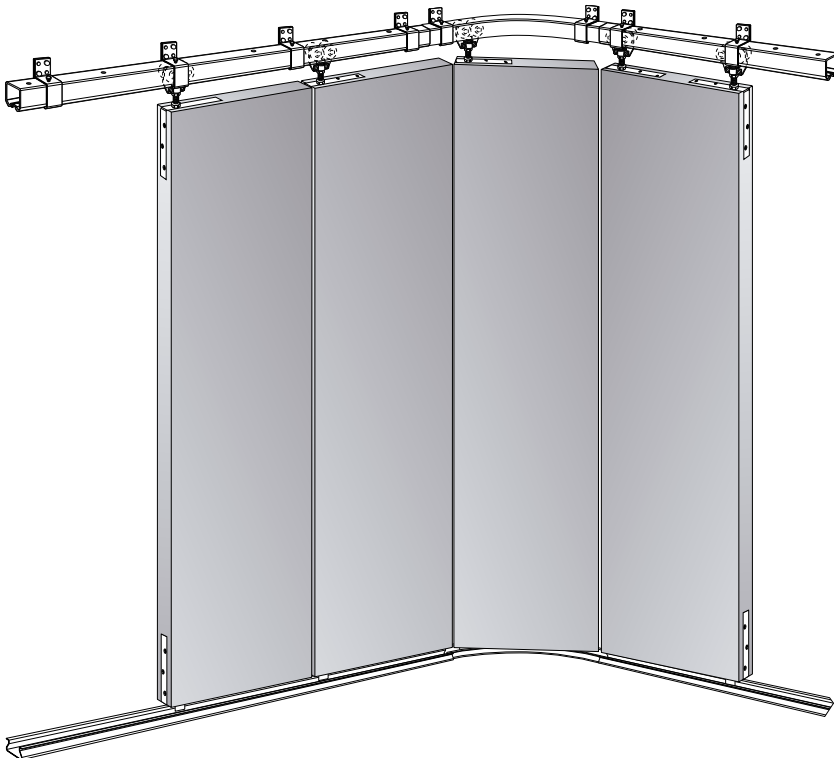
Systeme gemäß der Norm EN1527 bis 100.000 Zyklen getestet.

AR 35**AR 125**

AR 35



AR 125



REFERENCIAS / REFERENCES / RÉFÉRENCES / REFERENZ

ESP

AR 35			
Ref.	Descripción	U.	Img.
0841	PF. ACERO NEOCROM 1,50m	10	A
0842	PF. ACERO NEOCROM 2m	10	A
0844	PF. ACERO NEOCROM 3m	10	A
0850	PF. ACERO NEOCROM 5m	10	A
3331	PF. SUP. CURVADO ACERO NEOCROM	1	B
3333	PF. SUP.+ INF. CURVADO ACERO NEOCROM	1	C
3403	JGO. ACC. ARTICULADO PLEGADO LATERAL	2	H
3370	PF. ACERO NEOCROM 5m	1	G
0851	SOPORTE PARED	100	K
3383	EMPALME PERFIL AR 35	4	L

AR 125			
Ref.	Descripción	U.	Img.
3631	PF. SUP. CURVADO	1	E
3633	PF. SUP.+INF. CURVADO ACERO NEOCROM	1	F
3619	PF. ACERO NEOCROM 3m	2	D
3624	PF. ACERO NEOCROM 4m	2	D
3628	PF. ACERO NEOCROM 5m	2	D
3703	JGO. ACC. ARTICULADO/PLEGADO LAT.	2	I
3707	JGO. ACC. PLEGADO CENTRAL/LATERAL ESP. MET.	2	J
3370	PF. ACERO NEOCROM 5m	1	G
3683	EMPALME PERFIL AR 125	4	M
5521	SOPORTE PARED	10	N

ENG

AR 35			
Ref.	Description	Units	Img.
0841	PF. STEEL NEOCROM 1,50m	10	A
0842	PF. STEEL NEOCROM 2m	10	A
0844	PF. STEEL NEOCROM 3m	10	A
0850	PF. STEEL NEOCROM 5m	10	A
3331	CURVED PF. STEEL NEOCROM	1	B
3333	CURVED PF. (TOP/BOTTOM) STEEL NEOCROM	1	C
3403	SET OF ACC. END FOLD	2	H
3370	BOTTOM PF. STEEL NEOCROM 5m	1	G
0851	WALL BRACKET	100	K
3383	PROFILE JOINT AR 35	4	L

AR 125			
Ref.	Description	Units	Img.
3631	TOP CURVED PF. STEEL NEOCROM	1	E
3633	CURVED PF. (TOP/BOTTOM) STEEL NEOCROM	1	F
3619	PF. STEEL NEOCROM 3m	2	D
3624	PF. STEEL NEOCROM 4m	2	D
3628	PF. STEEL NEOCROM 5m	2	D
3703	SET OF ACC. ENDFOLD	2	I
3707	SET OF ACC. CENTER/END FOLD METAL DOORS	2	J
3370	BOTTOM PF. STEEL NEOCROM 5m	1	G
3683	PROFILE JOINT AR 125	4	M
5521	WALL BRACKET	10	N

FRA

AR 35			
Ref.	Description	Unités	Img.
0841	RAIL ACIER NEOCROM 1'50m	10	A
0842	RAIL ACIER NEOCROM 2m	10	A
0844	RAIL ACIER NEOCROM 3m	10	A
0850	RAIL ACIER NEOCROM 5m	10	A
3331	RAIL SUP. RECOURBÉ ACIER NEOCROM	1	B
3333	RAIL SUP.+ INF. RECOURBÉ ACIER NEOCROM	1	C
3403	JEU ACC. ARTICULÉ/PLIÉ LATÉRAL	2	H
3370	RAIL INF. ACIER NEOCROM 5m	1	G
0851	SUPPORT MURAL	100	K
3383	RACCORDEMENT RAIL AR 35	4	L

AR 125			
Ref.	Description	Unités	Img.
3631	RAIL SUP. RECOURBÉ	1	E
3633	RAIL SUP.+INF. RECOURBÉ	1	F
3619	RAIL ACIER NEOCROM 3m	2	D
3624	RAIL ACIER NEOCROM 4m	2	D
3628	RAIL ACIER NEOCROM 5m	2	D
3703	JEU ACC. ARTICULÉ/PLIÉ LAT.	2	I
3707	JEU ACC. PLIÉ CENTRE/LAT. SPE. METAL.	2	J
3370	RAIL INF. ACIER NEOCROM 5m	1	G
3683	RACCORDEMENT RAIL AR 125	4	M
5521	SUPPORT MURAL	10	N

DEU

AR 35			
Ref.	Beschreibung	Ein.	Bild
0841	PF. STAHL NEOCHROM 1'50m	10	A
0842	PF. STAHL NEOCHROM 2m	10	A
0844	PF. STAHL NEOCHROM 3m	10	A
0850	PF. STAHL NEOCHROM 5m	10	A
3331	OBERES GEBOGENES PF. ST NEOCHROM	1	B
3333	GEBOGENES PF. OBEN+UNTEN ST. NEOCHROM	1	C
3403	ZUBEHÖRSET GELENK/SEITLICHE FALTUNG	2	H
3370	UNTERES PF. STAHL NEOCROM 5m	1	G
0851	WANDBEFESTIGUNG	100	K
3383	ANSCHLUSS PROFIL AR 35	4	L

AR 125			
Ref.	Beschreibung	Ein.	Bild
3631	OBERES GEBOGENES PF.	1	E
3633	GEBOGENES PF. OBEN+UNTEN ST. NEOCHROM	1	F
3619	PF. STAHL NEOCHROM 3m	2	D
3624	PF. STAHL NEOCHROM 4m	2	D
3628	PF. STAHL NEOCHROM 5m	2	D
3703	ZUBEHÖRSET GELENK/SEITLICHE FALTUNG	2	I
3707	ZUBEHÖRSATZ ZENTRALE/SEITL. FALTUNG F. METAL.	2	J
3370	UNTERES PF. STAHL NEOCROM 5m	1	G
3683	ANSCHLUSS PROFIL AR 125	4	M
5521	WANDBEFESTIGUNG	10	N

REFERENCIAS / REFERENCES / RÉFÉRENCES / REFERENZ



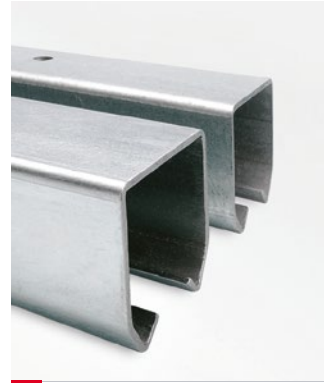
A



B



C



D



E



F



G



H



I



J



K



L



M



N

KLEIN®

KLEIN EUROPE
Edificio KLEIN
Polígono Industrial Can Cuyás
N-150 Km. 1
08110 Montcada i Reixac
Barcelona (Spain)

Tel.: +34 935 760 101
Fax: +34 935 760 109

+Info
klein@klein.es
www.klein.es

Síguenos en redes
Follow us on social media

